



2018 Bayfield Race Week

Wayzata Yacht Club - Apostle Islands Station
July 2 - 6, 2018
Bayfield, Wisconsin USA

Sailing Instructions

The notation [DP] in a rule in the Sailing Instructions (SI) means that the penalty for a breach of that rule may, at the discretion of the protest committee ("PC"), be less than disqualification.

The notation [NP] in a rule in the SI means that breaches in this rule will not be grounds for a protest by a boat. This changes RRS 60.1 (a).

1. Rules

- 1.1 The races will be governed by the rules as defined in the *Racing Rules of Sailing*.
- 1.2 Each boat must also comply with all U.S. Coast Guard and other applicable governmental laws, rules or regulations. [DP]
- 1.3 The following Racing rules will be changed as follows.
 - 1.3.1 SI 4.2 changes RRS Race Signal AP
 - 1.3.2 SI 9.1.4 changes RRS 18 and RRS 28 and adds the definition of a waypoint
 - 1.3.3 SI 10.4.1 changes RRS 29.1
 - 1.3.4 SI 10.4.2 changes RRS 29.2
 - 1.3.5 SI 12.1 changes RRS 44.1
 - 1.3.6 SI 14.2 changes RRS 62.2
 - 1.3.7 SI 15.2 changes RRS 35, A4 and A5
 - 1.3.8 SI 15.3 changes RRS A2.1

2. Notice to Competitors

- 2.1 Official notices to competitors will be posted on the Official Notice Board located at Bayfield Pavilion on Rittenhouse Avenue at the entrance doors on the south side of the building and the relevant Yachtscoring event page.

3. Changes to the Sailing Instructions

- 3.1 Changes to the SIs will be posted on the Official Notice Board and the relevant Yachtscoring event page by 0900 hrs, changes to the SIs will also be announced approximately two hours prior to the warning signal for the first race of the day by the Race Committee ("RC") on the official VHF radio channel (VHF), SI 17. Any change to the schedule of races will be posted by 2000 hrs on the day before it will take effect except:
 - 3.1.1 Change of race scheduled by adding a second race for Mid-Distance and JAM fleets may be announced via VHF on that day.



3.2 In accordance with RRS 90.2 the RC may alter these SIs by hailing the fleets and making the change on VHF.

4. Signals Made Ashore

- 4.1 Signals made ashore will be displayed on the RC Signal Boat at dock at the Blackhawk Boat Yard (located at East Dock Road, Bayfield, WI).
- 4.2 When flag AP is displayed ashore, '1 minute' is replaced with 'not less than 1 hour' in the Race Signal AP. This changes RRS Race Signal AP.

5. Schedule of Races

- 5.1 Registration for all fleets will be Sunday July 1, 2018 from 1600 – 1800 hrs at the Pavilion.
- 5.2 Competitors' meeting for all fleets will be held Monday July 2, 2018 at 0800 hrs at the Pavilion. Attendance by a representative of each boat is mandatory.
- 5.3 Dates of racing

Fleet	Race Dates	Races per Day
Buoy, Sport Boats, Small Boats, and Multi Hull	July 2 – 6, 2018	Up to 3 races
MD and JAM	July 2 – 6, 2018	Up to 2 races

- 5.4 The scheduled time of the first warning signal for the first race each day will be 1100 hrs. Postponement on shore may be announced via VHF at 0900 hrs each day.
- 5.5 The five planned days of racing are intended to include:
 - 5.5.1 The WYC/AIS Memorial Cup will be a 1-day pursuit start race for all fleets. This race honors the memory of those who have passed away who have made significant contributions to Bayfield Race Week. This shall be a pursuit race, with each yacht's start time provided at the competitors' meeting or during the social the night before the event and on the appropriate Yachtscoreing event page.
 - 5.5.2 There will be a 1-day medium distance race for all fleets. This race will serve to bring all competitors together on one common course, the exact length of which may be adjusted for some fleets.
 - 5.5.3 There will be three days of racing within the established fleet designations.
- 5.6 On the last scheduled day of racing no warning signal will be made after 1430 hrs.
- 5.7 Flag A displayed, with no sound, while boats are finishing means, "No more racing today".

6. Class Flags

- 6.1 Classes will be defined and posted on the Official Notice Board prior to the mandatory competitors' meeting.
- 6.2 Class flags for boats will be provided during registration and/or at the mandatory competitors' meeting.



6.2.1 Class flags shall be flown from the backstay. Any boats without a backstay shall affix the class flag to the end of their boom. [DP]

7. Racing Areas

7.1 Racing may be held anywhere in, near or around the Apostle Islands. Appendix A shows the partial area in which racing may be held.

8. The Courses

8.1 Buoy, Sport Boat, and Small Boat Fleets - Course diagrams are included with Appendix B. The specific windward mark that each class shall round will be posted with the course description by the RC.

8.1.1 Courses shall be Windward/Leeward with 2, 4, or 6 legs.

8.1.2 Windward marks are to be rounded to port.

8.1.3 Two windward marks may be laid as designated by ‘Wa’ (short windward leg) and ‘Wb’ (long windward leg).

8.1.4 A leeward mark (one mark) or leeward gate (two marks) may be used. The location of the leeward mark or gate will be approximately 0.2 nm to windward of the starting line. If one of the leeward gate marks is missing, boats shall round the existing leeward mark to port.

8.1.5 A windward offset mark may be laid. Windward offset marks will be located to port of the windward mark(s), approximately perpendicular to the course axis. The windward offset mark(s) are rounded to port. If no offset mark is in place, the windward mark shall be rounded to port.

8.1.6 Marks for the Buoy Courses shall be designated as follows:

Mark	Description	Mark	Description
S	Start	L	Leeward
W	Windward	F	Finish
Wa	Windward - Short	G	Gate
Wb	Windward - Long	O	Offset

8.2 MD and JAM Fleets - Appendix A shows the approximate location of the marks that might be used to define the course for the MD and JAM fleets.

8.3 Multi-Hull, Sport Boat, and Small Boat Fleets, at the discretion of the RC, may sail a windward leeward course as described in SI 8.1 or a Mid Distance course as described in SI 8.2.

8.4 Courses will be posted on a display board on the RC Signal boat. They will show the course, the order in which the marks are to be passed, and the side on which each mark is to be passed. The RC will also announce the course on VHF.

8.5 The approximate compass bearing and distance from the starting line to Windward Mark will be displayed from RC Signal Boat.

8.6 Memorial Cup: course may use any combination of marks to provide a course of the desired distance.



- 8.7** The one-day medium distance race for all fleets may use any combination of marks to provide a course of the desired distance.

9. Marks

- 9.1** Marks may be:

- 9.1.1** Temporary buoys (which may be red, orange, white, yellow, or green and be in the form of cylinders, spheres or tetrahedrons),
 - 9.1.2** Islands,
 - 9.1.3** Government navigation marks/buoys, and/or
 - 9.1.4** Waypoints as defined by latitude and longitude coordinates, that the course requires a boat to leave on a specified side. Any use of a waypoint shall be in accordance with World Sailing Appendix WP. Appendix WP can be found at www.wyc.org/ais and the relevant Yachtscoring event page. This appendix changes RRS 18 and RRS 28 and adds a definition of a waypoint.
- 9.2** All boats shall obey all government navigation marks/buoys along the rhumb line while racing, except if the navigation mark/buoy is a mark of the course, when such navigation mark/buoy may be rounded pursuant to RC instructions.

10. The Start

- 10.1** The start order will be announced at the competitors' meeting.
- 10.2** Races will be started using RRS 26. The warning signal of each succeeding class may be made with the start signal of the preceding class.
- 10.3** The starting line will be between a staff displaying an orange flag on an RC Signal Boat at the starboard end and course side of the starting mark.
- 10.4** Recalls will be signaled as follows:
 - 10.4.1** When signaling an individual recall, RC shall announce via VHF radio the sail number(s) of boat(s) identified as being OCS. This changes RRS 29.1.
 - 10.4.2** When signaling a General Recall, the recalled class will go to the end of the starting order. This changes RRS 29.2.
- 10.5** Memorial Cup
 - 10.5.1** The WYC/AIS Memorial Cup will follow a pursuit format where all boats will be classified by their LMPHRF number with the slowest boats starting first and the fastest boats starting last.
 - 10.5.2** Each yacht's start time will be provided at the skippers meeting or during the social the night before the event and on the relevant Yachtscoring event page.
 - 10.5.3** Starting area, course and finish line location to be announced at 0900 hrs via VHF on the day of the race.
 - 10.5.4** Competitors are reminded of their Rule 24.1 obligations. Specifically, unless a boat is within four minutes of her start time, she is to stay clear of the starting area. If she is within four minutes of her start time she is racing. [DP]
 - 10.5.5** WYC/AIS Memorial Cup starts may be made with RRS 30.1. The I Flag may be displayed as a preparatory signal from four minutes before the first start and taken down one minute before the last start.



- 10.6** Any boat using a sail with an alternate sail number will report the proper sail number in writing to the RC, no later than 2 hours prior to the warning signal for the first race of the day, or by VHF hail to the RC no later than 30-minutes prior to the warning signal for the first race of the day. [DP]
- 10.7** A boat that does not start within 10 minutes after her starting signal will be scored 'Did Not Start' (DNS) without a hearing. This changes RRS A4 and A5.

11. The Finish

- 11.1** Buoy, Sport, and Small Boat Fleets:
 - 11.1.1** The Finish will be between a staff displaying an orange flag on a RC Signal Boat and the course side of the mark nearest to the RC Signal Boat, unless an alternative location is announced with the course description.
- 11.2** MD/JAM Fleet:
 - 11.2.1** The finish will be between the Orange Flag located at the Bayfield Fishing Dock and a buoy approximately 200 yards from the pier, unless an alternative location is announced with the course description.
- 11.3** Multi-Hull class:
 - 11.3.1** SI 11.1 shall apply when sailing a buoy course as described in SI 8.1.
 - 11.3.2** SI 11.2 shall apply when sailing a MD course as described in SI 8.2.
- 11.4** Memorial Cup will be finished at the Fishing Dock between the Orange Flag located at the Bayfield Fishing Dock and a buoy approximately 200 yards from the pier, unless an alternative location is announced with the course description
- 11.5** At the discretion of the RC, a race may be finished at a waypoint. A waypoint is defined by latitude and longitude coordinate. When finishing at a waypoint, the finish line is a line through the waypoint at a 90-degree angle to the last leg and of the shortest practical length.
 - 11.5.1** Boats shall log their GPS finish time.
 - 11.5.2** In addition, boats shall log the sail number of the boat ahead and behind their finish position, if reasonably possible. [NP]

12. Penalty System

- 12.1** RRS Appendix V1 applies and is in effect. This changes RRS 44.1.
- 12.2** RRS Appendix T applies – Arbitration will be in effect for this event.

13. Time Limits

- 13.1** Buoy Fleet:
 - 13.1.1** The time limit for the first boat of a class to finish each buoy race will be 3 hours from their start signal. Any boat within the class not finishing a race within 1 hour after the first boat of the class finishes will be scored Time Limit Expired ("TLE"). This changes RRS 35, A4 and A5.
- 13.2** MD/JAM Fleets:
 - 13.2.1** For all MD/JAM classes the time limit for the first boat to finish will be 4 hours from their start signal.



15. Scoring

- 15.1 A boat's corrected time will be determined using the PHRF Time on Distance calculation.
- 15.2 A boat that does not finish within the specified time period (SI 13) shall be scored points for the finishing place one more than the number of boats that finished in the time period. These boats will be assigned the scoring abbreviation of TLE – Time Limit Expired. This changes RRS 35, A4 and A5.
- 15.3 A boats series score will be the total of her races. There are no throw-outs. This changes RRS A2.1.
- 15.4 The score of each boat's Memorial Cup finishing position, within its respective class, will also be included within their respective class for overall scoring of Bayfield Race Week.
- 15.5 One race is required to be completed to constitute a Regatta.

16. Safety Regulations

- 16.1 Each boat must comply with the following: [NP] [DP]
 - 16.1.1 Each boat must comply with all U.S. Coast Guard and other applicable governmental laws, rules and regulations.
 - 16.1.2 A boat that retires from a race shall notify the RC as soon as possible. RC will monitor VHF.
 - 16.1.3 All boats shall have a working motor appropriate for the size of the boat.
 - 16.1.4 Each boat must have a functioning VHF marine-grade radio while racing.
 - 16.1.5 Each boat must have a functioning GPS receiver capable of displaying a boat's latitude and longitude position while racing.
 - 16.1.6 Personal Flotation Devices
 - 16.1.6.1 At the Start and Finish of each race, each person on board each boat is required to wear a USCG or ISO approved personal flotation device (PFD). The use of an ISO approved PFD does not negate the USCG requirement that each vessel must have at least one (1) USCG approved Type III or V life jacket for each person on board. Belt pack style PFD's are not allowed.
 - 16.1.6.2 Any boat with only two (2) individuals on board, both individuals shall wear a life jacket at all times, except briefly while changing or adjusting clothing or personal equipment.
 - 16.1.7 All boats are subject to inspection by the Technical Committee at any time.
- 16.2 Abandonment Due to Weather
 - 16.2.1 Races for individual fleets may be abandoned or postponed when the 5-minute mean wind speed exceeds 24 knots or wind gusts exceed 30 knots, as determined by RC Principal Race Officer ('PRO'). If these conditions exist 90 minutes before the scheduled warning signal, signals may be made ashore. If these conditions develop less than 90 minutes prior to the scheduled warning signal start, signals may be made by RC Signal Boat.



16.2.2 Should the 5-minute mean wind speed exceed 20 knots but not 24 knots, RC PRO may change the course for some or all fleets to a Medium Distance course, as determined by the PRO (with input by RC Chair at PRO's discretion).

17. Radio Communication

- 17.1** All official radio communications shall be made on VHF Channel 72.
- 17.2** Except in an emergency, a boat that is racing shall not make voice or data transmissions and shall not receive voice or data communication not available to all boats. This restriction also applies to mobile telephone, tablets, computers, and similar devices. [DP]
- 17.3** Boats are reminded of their obligation to maintain a radio watch on VHF Channel 16 to be compliant with USCG regulations.

18. Prizes

- 18.1** 1st, 2nd & 3rd place trophy prizes will be awarded for each class. Daily prizes may also be awarded. Additional trophy prizes or awards may be awarded at the discretion of the Organizing Authority.
- 18.2** 1st to 5th place trophies will be awarded for the Memorial Cup Race; in addition, the boat name of the overall winner shall be inscribed on the Memorial Cup Perpetual Trophy.

19. DISCLAIMER OF LIABILITY, WAIVER, AND RELEASE OF LIABILITY

- 19.1** Sailing is an activity that has an inherent risk of damage and injury, including without limitation bodily injury, personal injury, permanent disability, and death. Each person (including without limitation owner, skipper, crew, spectators, officials, and others) participates in each race, social event, and/or associated activity(ies) entirely at his/her **own risk**. See RRS 4, "Decision to Race".
- 19.2** ORGANIZING AUTHORITY, RACE COMMITTEE, PROTEST COMMITTEE, SPONSORS, HOST CLUB AND VENUE (AND EACH OF THEIR RESPECTIVE OFFICERS, DIRECTORS, EMPLOYEES, CONTRACTORS, OFFICIALS, MEMBERS, GUESTS, VOLUNTEERS, REPRESENTATIVES AND ALL OTHER PERSONS IN THEIR CAPACITY OF ASSISTING A RACE, SOCIAL EVENT AND/OR ASSOCIATED ACTIVITIES) (COLLECTIVELY, "**RACE ORGANIZERS**") WILL NOT BE RESPONSIBLE OR LIABLE FOR ANY ACTION, CLAIM OR SUIT (COLLECTIVELY, "**CLAIMS**") OR LIABILITY, LOSS, DAMAGE, ACCIDENT OR INJURY WHATSOEVER (INCLUDING BODILY INJURY, PERSONAL INJURY, PERMANENT DISABILITY OR DEATH) (COLLECTIVELY, "**DAMAGES**") TO ANY PERSON, PROPERTY OR BOAT WHETHER CAUSED BY, ARISING OR RESULTING FROM THEIR ACT, ERROR, OMISSION OR ALLEGED NEGLIGENCE OR MISCONDUCT, WEATHER OR SEA CONDITIONS, HAZARDS OF ANY KIND, DEFECTS OR FAILURE OF BOATS TO BE SEAWORTHY IN HULL, RIGGING OR GEAR, OR ANY ACTS, ERRORS OR OMISSIONS OR ALLEGED NEGLIGENCE OR



- MISCONDUCT OF **RACE ORGANIZERS** OR OTHER PARTICIPANTS OR BOATS WHICH MAY OCCUR PRIOR TO, DURING OR ARISING OUT OF OR IN CONNECTION WITH ANY RACE, REGATTA, EVENT, CRUISE, SPECTACLE, SOCIAL EVENT, RACE FACILITIES OR ANY ACTIVITY SCHEDULED, SPONSORED OR AIDED IN WHOLE OR IN PART BY ANY **RACE ORGANIZER(S)**, TO THE FULLEST EXTENT PERMITTED BY LAW.
- 19.3** BY PARTICIPATING, EACH PARTICIPANT (AND IN THE CASE OF CHILDREN AND MINORS, EACH PARTICIPANT’S PARENT OR GUARDIAN) FOREVER WAIVES, DISCHARGES AND RELEASES ANY AND ALL **CLAIMS** WHATSOEVER AGAINST **RACE ORGANIZERS** FOR ANY **DAMAGES** TO ANY PERSON, PROPERTY OR BOAT (I) SUSTAINED IN CONJUNCTION WITH OR PRIOR TO, DURING, OR AFTER EACH RACE, SOCIAL EVENT AND ASSOCIATED ACTIVITIES; OR (II) ARISING, RELATING OR RESULTING FROM USE OF RACE FACILITIES OR PARTICIPATION IN ANY RACE, SOCIAL EVENT OR ASSOCIATED ACTIVITIES, TO THE FULLEST EXTENT PERMITTED BY LAW.
- 19.4** PARTICIPANT RELEASES ALL **RACE ORGANIZERS** FROM ANY **CLAIM** ON ACCOUNT OF GIVING ASSISTANCE, AID, CARE, ADVICE, RESCUE, FIRST AID, TREATMENT OR SERVICES.
- 19.5** OWNERS AND SKIPPERS OF ALL PARTICIPATING BOATS ARE REQUIRED TO INFORM ALL CREWMEMBERS OF THIS **DISCLAIMER OF LIABILITY AND RELEASE** AS A CONDITION OF ENTRY.

20. Insurance

- 20.1** All boats must maintain Liability Insurance in full force and effect during *racing* which will include a General Liability policy written by a reputable insurance company insuring the owner and any operators against liability for bodily injury in limits of not less than \$300,000 and for property damage of not less than \$100,000. Each boat will present proof of insurance upon OA’s request.

21. Publicity and Photographer’s Rights

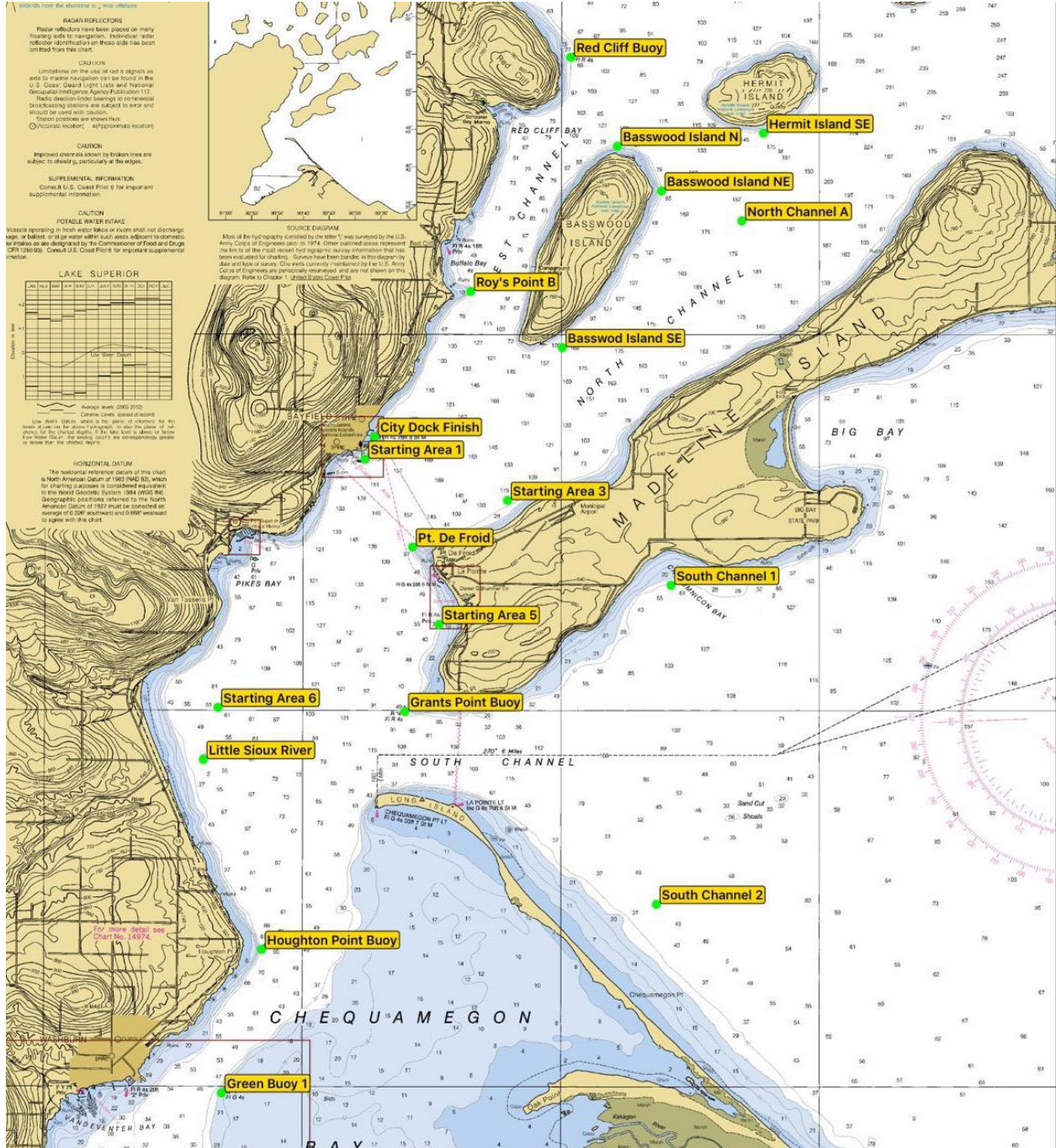
- 21.1** As a condition of participation, each participant (on behalf of him/herself and their children and minors) grants Race Organizers (and their designated photographers, videographers, and marketing, communications and public relations personnel) the perpetual, irrevocable right, license and permission to use, publish and distribute the participant’s name, photos, video, images and statements of them and their boat and crew in all forms and media worldwide (including without limitation Internet) for any purposes whatsoever (including without limitation press releases, advertising, promotions, sales of pictures, etc.) without compensation, notification or further permission.

22. Organizing Authority.

- 22.1** Organizing Authority (“OA”) and Host Club is the Apostle Islands Station of the Wayzata Yacht Club.



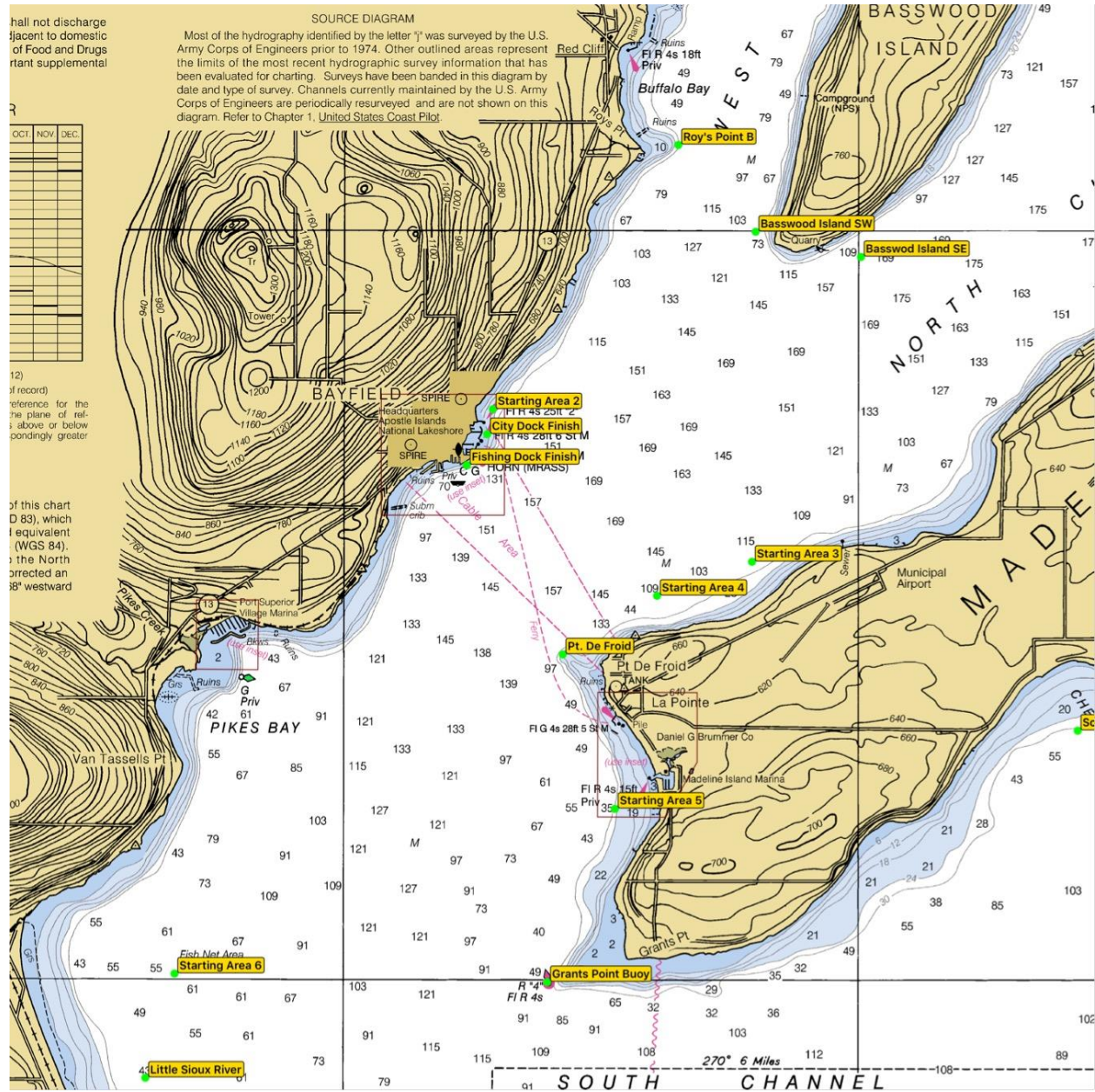
Appendix A



Note: All Mark locations are approximate.



Appendix A



Note: All Mark locations are approximate.



Appendix A

Bayfield Race Week - 2018

Waypoint Coordinates

Starting Areas		DMS		DMM		DD	
Waypoint	Description	Latitude	Longitude	Latitude	Longitude	Latitude	Longitude
SA1	Starting Area 1 off USCG Station	46°48'19.8"N	90°48'46.7"W	46°48.330'N	90°48.778'W	46.805500N	90.812970W
SA2	Starting Area 2 - North of Bayfield Ferry Do	46°48'47.9"N	90°48'32.1"W	46°48.798'N	90°48.535'W	46.813300N	90.808910W
SA3	Starting Area 3 off Madeline Island Airport	46°47'46.9"N	90°46'00.9"W	46°47.782'N	90°46.014'W	46.796370N	90.766910W
SA4	Starting Area 4 off Pt. De Froid	46°47'33.3"N	90°46'56.2"W	46°47.555'N	90°46.936'W	46.792580N	90.782270W
SA5	Starting Area 5 off of La Pointe	46°46'08.0"N	90°47'20.7"W	46°46.133'N	90°47.344'W	46.768890N	90.789070W
SA6	Starting Area 6 - South of Pikes Bay	46°45'01.7"N	90°51'37.1"W	46°45.029'N	90°51.618'W	46.750480N	90.860310W
Finish Areas		DMS		DMM		DD	
Waypoint	Description	Latitude	Longitude	Latitude	Longitude	Latitude	Longitude
CDF	City Dock Finish	46°48'37.9"N	90°48'35.4"W	46°48.632'N	90°48.590'W	46.810530N	90.809840W
FDL	Fishing Dock Finish	46°48'25.5"N	90°48'47.1"W	46°48.425'N	90°48.786'W	46.807090N	90.813100W
Fixed Government Marks		DMS		DMM		DD	
Waypoint	Description	Latitude	Longitude	Latitude	Longitude	Latitude	Longitude
GP	Grants Point Buoy	46°44'58.6"N	90°48'00.0"W	46°44.976'N	90°48.001'W	46.749600N	90.800010W
GB1	Green Bouy 1 - South of Houghton Point	46°39'54.3"N	90°51'32.3"W	46°39.906'N	90°51.538'W	46.665090N	90.858970W
HPB	Houghton Point Buoy	46°41'48.7"N	90°50'46.0"W	46°41.812'N	90°50.766'W	46.696870N	90.846107W
RCB	Red Cliff Bouy	46°53'40.5"N	90°44'47.5"W	46°53.675'N	90°44.791'W	46.894580N	90.746520W
Drop Marks		DMS		DMM		DD	
Waypoint	Description	Latitude	Longitude	Latitude	Longitude	Latitude	Longitude
BSE	Basswood Island SE	46°49'49.0"N	90°44'57.3"W	46°49.816'N	90°44.954'W	46.830270N	90.749240W
BS	Basswood Island South Tip	46°49'47.0"N	90°45'41.0"W	46°49.784'N	90°45.683'W	46.829730N	90.761390W
BSW	Basswood Island SW	46°49'59.0"N	90°45'58.8"W	46°49.983'N	90°45.980'W	46.833060N	90.766330W
BNNW	Basswood Island NNW	46°52'22.2"N	90°44'20.7"W	46°52.370'N	90°44.344'W	46.872830N	90.739070W
BN	Basswood Island N	46°52'29.6"N	90°43'53.1"W	46°52.494'N	90°43.886'W	46.874890N	90.731430W
BNNE	Basswood Island NNE	46°52'20.4"N	90°43'18.1"W	46°52.340'N	90°43.301'W	46.872330N	90.721690W
BNE	Basswood Island NE	46°51'53.9"N	90°43'02.0"W	46°51.898'N	90°43.033'W	46.864970N	90.717220W
HSE	Hermit Island SE	46°52'40.0"N	90°41'03.2"W	46°52.666'N	90°41.054'W	46.877770N	90.684230W
LSR	Little Sioux River	46°44'20.1"N	90°51'54.0"W	46°44.335'N	90°51.900'W	46.738920N	90.865000W
NCA	North Channel A	46°51'30.0"N	90°41'28.4"W	46°51.500'N	90°41.474'W	46.858333N	90.691230W
PDF	Point De Froid	46°47'09.8"N	90°47'51.2"W	46°47.163'N	90°47.853'W	46.786050N	90.797550W
RPB	Roy's Point B	46°50'33.7"N	90°46'43.9"W	46°50.562'N	90°46.732'W	46.842700N	90.778870W
SC1	South Channel 1 - Chebomnicon Bay	46°46'39.3"N	90°42'50.9"W	46°46.656'N	90°42.848'W	46.777590N	90.714130W
SC2	South Channel 2 - North of Chequamegon P	46°42'24.9"N	90°43'08.0"W	46°42.415'N	90°43.133'W	46.706910N	90.718890W

Note: All Mark locations are approximate.



Appendix B – Buoy Course Descriptions

<p>Course Examples:</p> <ul style="list-style-type: none"> • W/L 2 = S-W-F • W/L 4 = S-W-L-W-F • W/L 6 = S-W-L-W-L-W-F • W/L 2 O = S-W-O-F (with Offset) • W/L 4 G = S-W-G-W-F (with Gate) • W/L 4 O G = S-W-O-G-W-O-F (with Offset & Gate) 	<p>Course Examples:</p> <ul style="list-style-type: none"> • Wa/L 2 = S-Wa-F • Wa/L 4 = S-Wa-L-Wa-F • Wb/L 6 = S-Wb-L-Wb-L-Wb-F • Wb/L 2 O = S-Wb-O-F (with Offset) • Wb/L 4 G = S-Wb-G-Wb-F (with Gate) • Wb/L 4 O G = S-Wb-O-G-Wb-O-F (with Offset & Gate) 	

Note: Course diagrams and examples do not illustrate all potential course configurations. Any Buoy Course may be changed to finish at the Bayfield Fishing Dock